

## Attaching Hanging Sleeves

by Kathy Echter

Hanging sleeves on your quilts not only make the quilt look better when displayed, they also saves your quilt from getting pulled out of shape.

### Hanging Sleeve - Method 1

This method you sew the hanging sleeve into the binding seam. Take the desired finished width of the sleeve and multiply by 2. Then add the binding seam allowance times 2. This gives you the cut width.

Measure the width of the quilt from binding seam to binding seam along the edge where the hanging sleeve will be attached. Add 2" to that measurement. This will be your cut length.

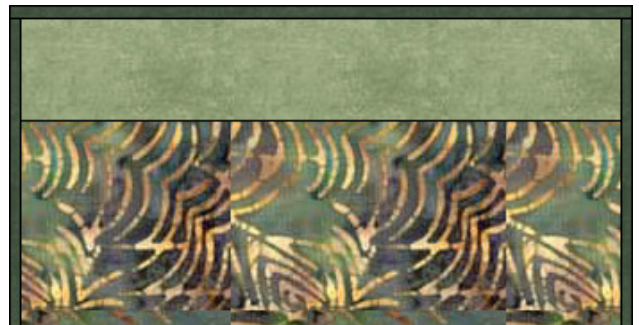
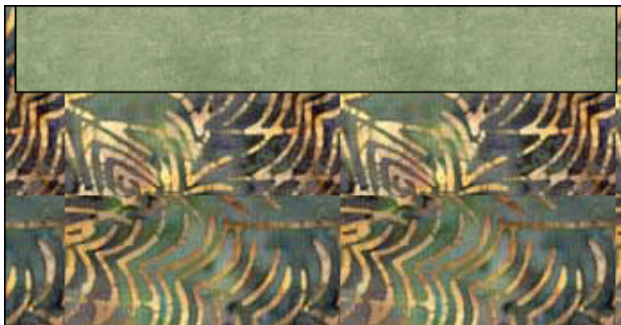
Fold in 1" on both ends of the sleeve, fold under  $\frac{1}{2}$ " and machine stitch down.



Fold the fabric in half lengthwise, with the wrong sides together.



Lay the sleeve with the raw edges even with the quilt top. Baste down 1/8 inch from the top edge of the quilt. When the binding is sewn on, the top edge of the sleeve will be inside the binding seam. Hand sew the sleeve to the quilt along the bottom edge through the backing and batting, making sure not to sew through to the front of the quilt. Be sure to stitch down the short ends of the sleeve as well, making sure to leave the pocket open for the hanging rod.



## Attaching Hanging Sleeves

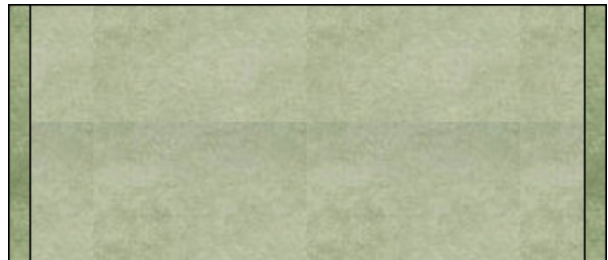
by Kathy Echter

### Hanging Sleeve – Method 2

Measure the width of the quilt from binding seam to binding seam along the edge where the hanging sleeve will be attached. Add 2" to that measurement. This will be your cut length.

Decide how wide the finished sleeve needs to be. The standard is a 4" wide sleeve. The cut width would be:  $(\text{finished width} \times 2) + 1"$  for seam allowances = cut width.  
(i.e.  $4" \times 2 = 8" + 1" = 9"$  cut width)

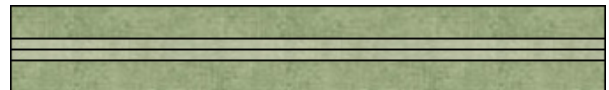
Fold in 1" on both short ends of the strip, fold under  $\frac{1}{2}"$  and machine stitch down.



Fold the fabric in half lengthwise, with the wrong sides together. Sew the long edges together using a  $\frac{1}{4}$  inch seam allowance.



Press the seam allowance open and to the center of the sleeve.



Lay the sleeve, seam side down, on the back of the quilt just below the upper binding seam. Hand stitch the sleeve to the back along the crease lines. The sleeve will bulge up in the center.

